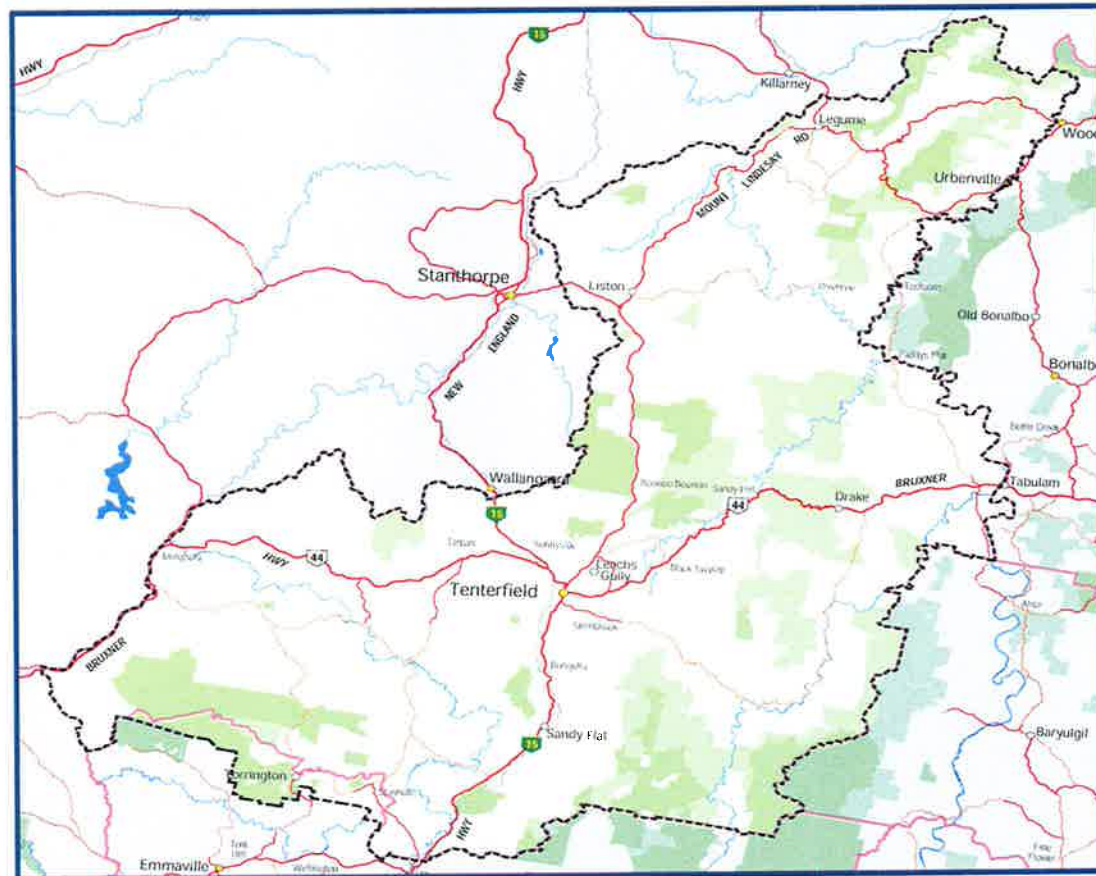




Our Infrastructure

Community Forums November 2012

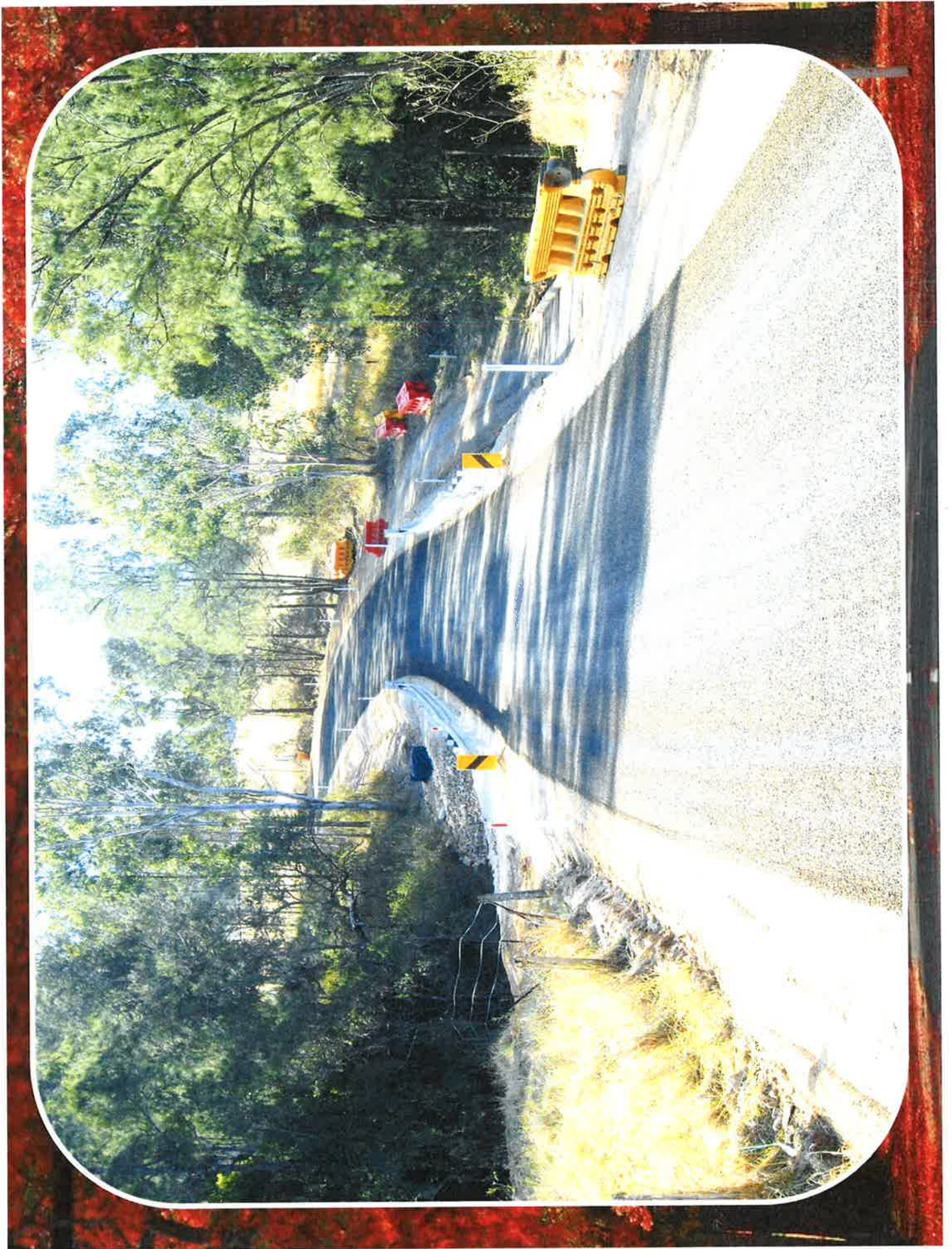


Roads

- 1704 km total roads
- 503 km sealed roads
- 4,540 piped culverts
- 390 causeways

Types of Roads

- State maintained roads
(New England and Bruxner East)
- Regional and Primary Through Roads
(Mt Lindesay, Bruxner West, Paddy's Flat, Tooloom)
- Secondary Through Roads
(Black Swamp, Pye's Creek)
- Primary Access and Secondary Access













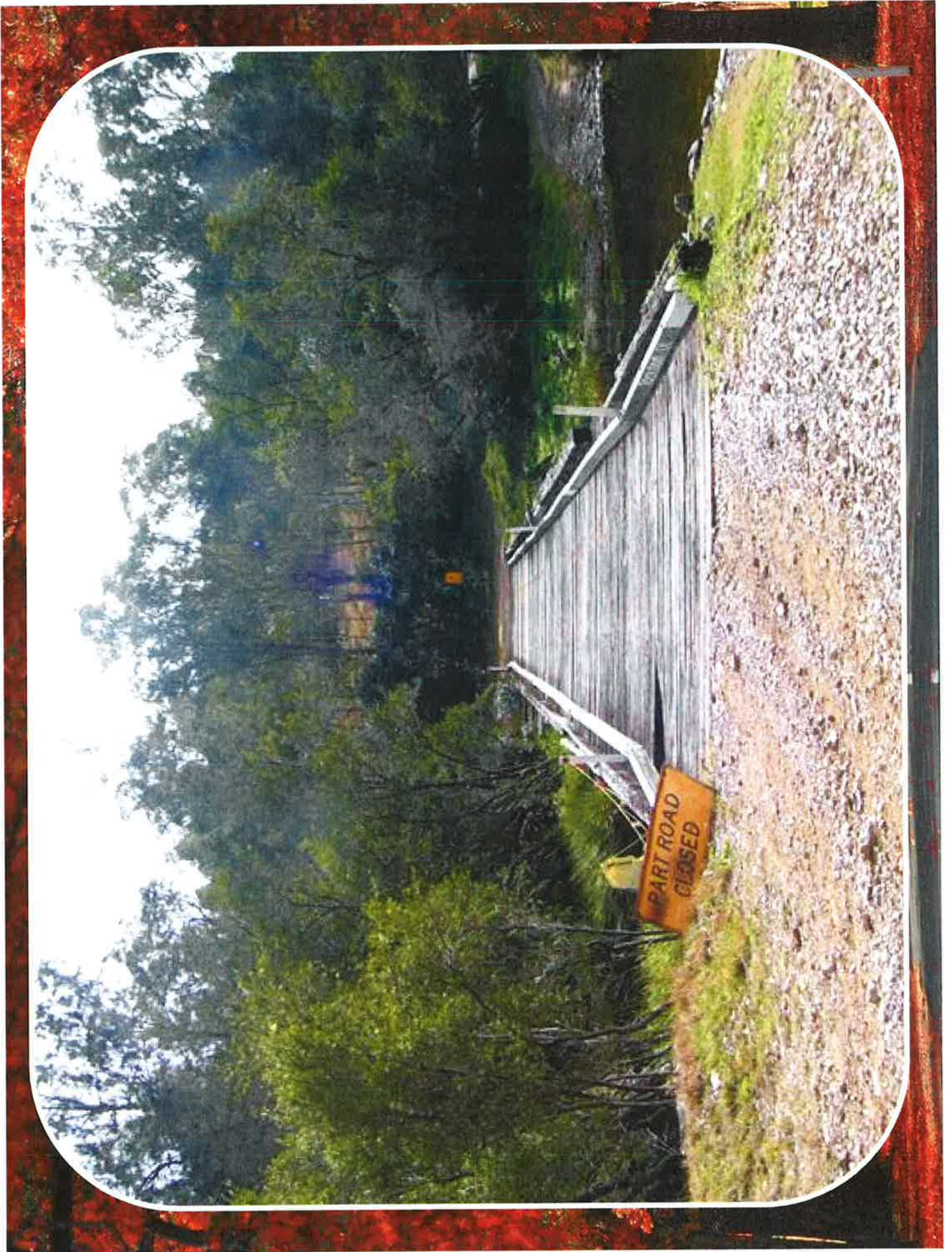




Bridges

- 145 Bridges
- 62 Timber, including 2 on regional roads
- Design life of a timber bridge is about 50 years
- Some bridges are at least 78 years old
- The bridge over the Koreelah Creek was designed and built by Bradfield in 1931





Stormwater

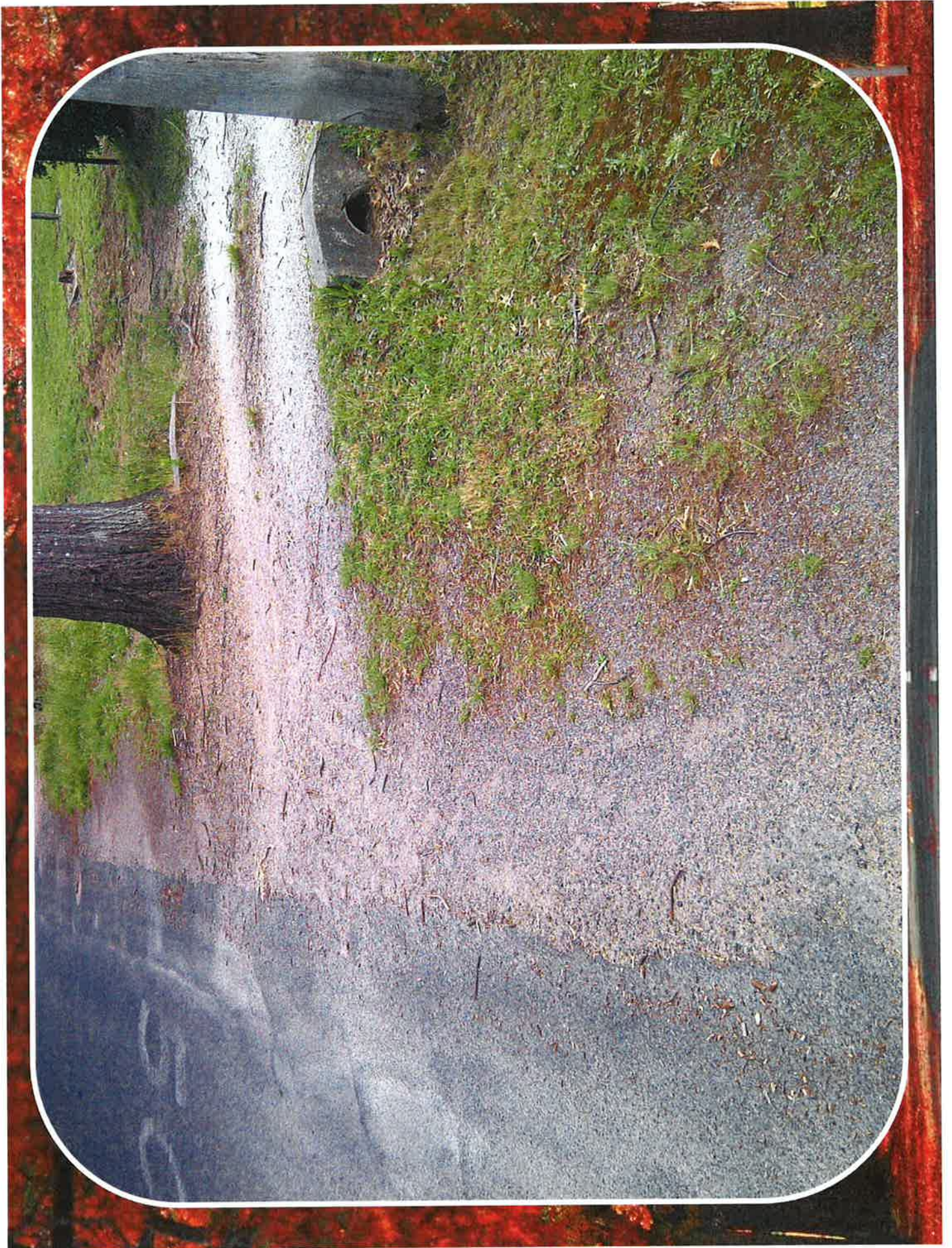
- 1067 urban stormwater lines
- 100's of pits and headwalls
- Around 30km of kerb
- No consistency in the design of pits or pipes
- A lot of aging infrastructure
- Many trees and obstructions complicate drainage design
- Issues caused by noncompliant, poorly maintained and illegal driveway accesses.







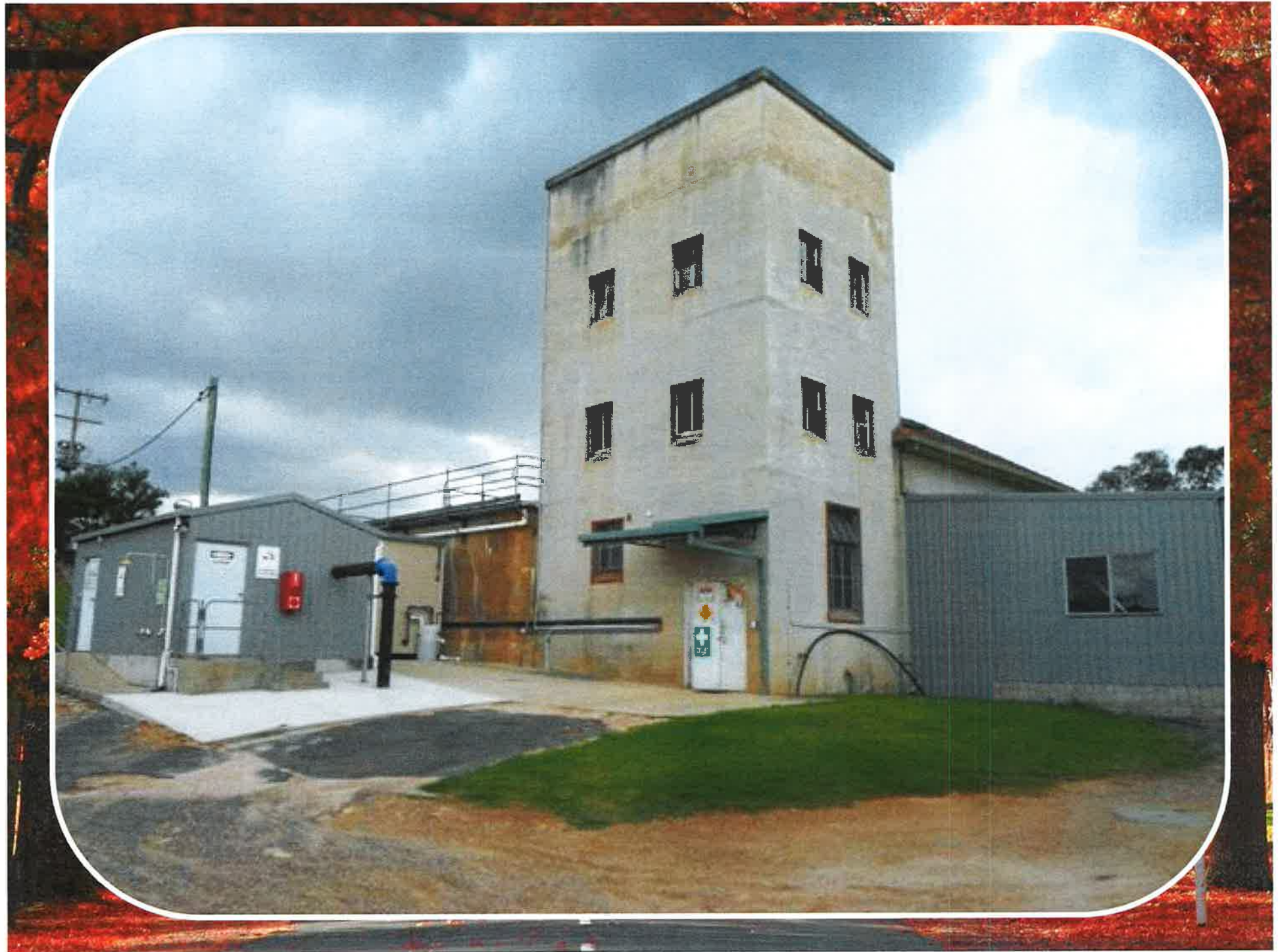




Water Supply

- Tenterfield Dam built in 1931 and holds 827 megalitres
- Raised in 1974 and now holds 1.15 gegalitres
- Most of our trunk mains are from the same era
- Our water treatment plant is over 50 years old and is at the end of its life
- Our reservoirs need relining as they are 80 years old and in poor condition
- Water discolouration occurs due to build up in pipes. They can be scoured but this is expensive.
- We test the drinking water quality on a daily basis. Independent laboratory [NATA accredited] tests are undertaken every month.





Waste water

- Tenterfield Sewerage Treatment plant commissioned in 2011
- Urbenville commissioned in 1984
- Much of the connected infrastructure for Tenterfield is as old as 60 years, dating to 1954
- State of the art is expensive
- Old infrastructure is a maintenance problem – relining program
- We test the treated water from the sewerage plant every day. Independent laboratory [NATA accredited] tests are undertaken every month.
- We require EPA licenses for both our sewer and water operations.

